

# ENGINEERING SERVICES

**CORPORATE  
PROFILE 2026**

# Executive Overview

Established in 2016, Nord Engineers is a pan-India and global structural engineering consultancy specializing in steel structures, PEB systems, and PMB solutions. We offer complete design, detailing and fabrication support to ensure every project is delivered with precision, clarity and efficiency.

Our proof-checking and detailing services ensure full structural accuracy, safety and compliance with international standards. Every element, from beams to connections is engineered to enhance performance and eliminate fabrication errors.

With strong expertise in steel design, PEB engineering and turnkey execution, we build durable, cost-efficient and future-ready structural frameworks for industrial and architectural projects. Our commitment to quality, innovation and timely delivery makes Nord Engineers a trusted partner in structural engineering excellence.



# Company Snapshot

- ✓ Founded : 2016
- ✓ Headquarters : Ch. Sambhaji Nagar (Aurangabad), India
- ✓ International Office : 32 Eyre Street, Sheffield, S14QZ. United Kingdom
- ✓ Team Strength : 70+ Engineers, Designers, and Surveyors
- ✓ Monthly Capacity : 3,000 MT Steel Design & Detailing  
500,000 Sq.ft RCC Design & Detailing
- ✓ Project Value Delivered : USD 286 Million+
- ✓ Sector Coverage : Industrial, Commercial, Healthcare, Institutional, Residential, Monumental

## Nord Engineers Company Overview



Headqurter Aurangabad (M.S) India.

Established 2016 Founded



Aurangabad (M.S) India.



Branch Office UK Office



Global Team 70+ Team Members



Steel Capacity 3000 MT - Steel Design Detailing



Project Value USD 208 Million+ Projects



RCC Design 5000000 Sq.Ft



Project Value USD 77 Million+ Projects

## Sectors

Industrial

Commercial

Pharma

Steel

Oil & Gas

Agro

Textile

Sugar

Chemical

Food/Dairy

Institutional

Health

1

2



# Vision

## HORIZONS BEYOND

Nord Engineers envisions a future without limits, leading global structural innovation and excellence. We will set new benchmarks in design, expand our reach across continents, and leave a lasting impact on communities and the environment through sustainable, cutting-edge engineering.



# Mission Statement

Nord Engineers delivers innovative and practical structural designs with a strong focus on efficiency, safety, and sustainability. We build transparent, integrity-driven partnerships that create long-term value for clients and stakeholders. By addressing complex engineering challenges with optimized resources and modern construction methods, we deliver reliable solutions and set industry standards.







### Tailored Uniqueness

Craft bespoke solutions aligned with each client's unique objectives, constraints, and vision.



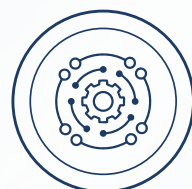
### Tech-Forward Thinking

Leverage BIM, FEM, and international codes as standard tools for accuracy, efficiency, and collaboration.



### Integrity & Collaboration

Foster transparent, ethical partnerships through open communication, shared insights, and collective



### Passion for Complexity

Embrace and solve intricate design challenges with innovative problem solving and technical expertise.



### Punctuality as a Promise

Commit to delivering every project on or before schedule to build client trust and ensure disciplined management.

# OUR CORE VALUES





# Message From Leadership

At Nord Engineers, our unwavering commitment to excellence drives every decision. Since our inception, we have believed that true engineering goes beyond calculations—it's about enhancing lives, communities, and the built environment. Our multidisciplinary team brings together creativity, technical rigor, and ethical practice. As we expand globally, we remain dedicated to delivering structures that combine safety, innovation, and sustainability.



At NORD ENGINEERS, we are dedicated to delivering smart, practical and innovative structural design solutions. We focus on making every structure functional, economical and sustainable while adding real value to our clients and all stakeholders.

For us, true structural engineering is more than codes and standards, it is about understanding how each structure fits into the complete design vision. With transparent and collaborative partnerships, we have successfully delivered outstanding projects across diverse sectors.

From solving complex structural challenges to optimizing designs for cost and speed, we prioritize customer-centricity, innovation and safety. Driven by honesty, integrity and excellence, we continue to build structures that make a meaningful difference.

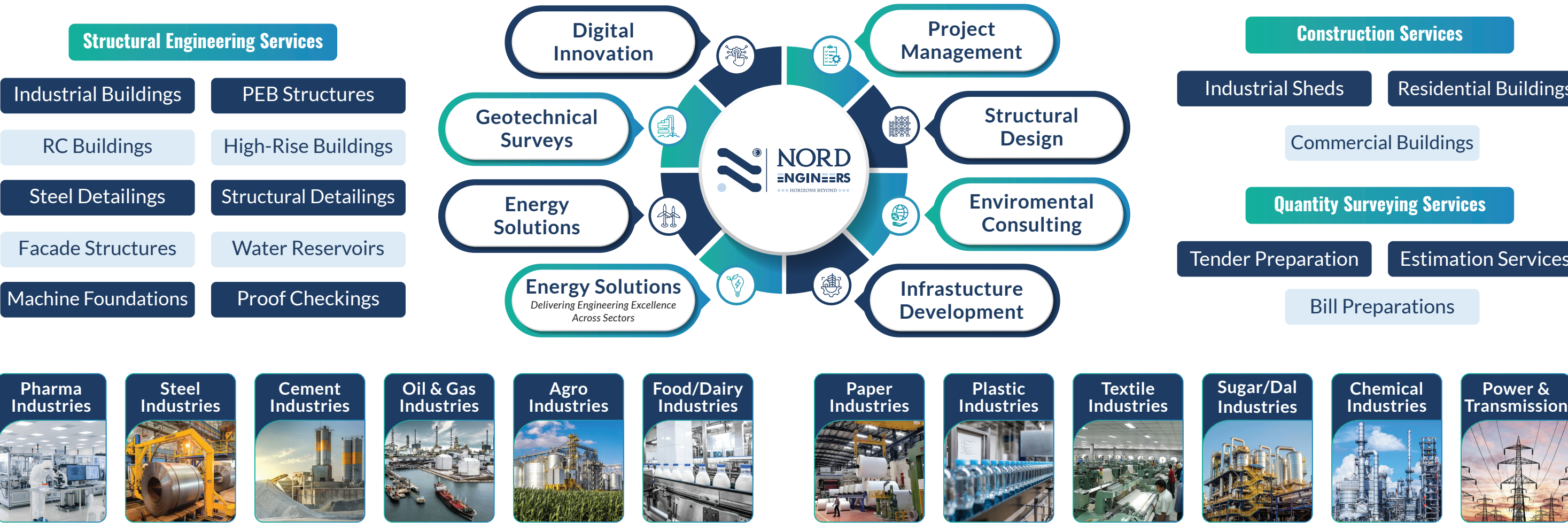
**Er. Sohail Shaikh**  
Technical Director Design





# Service Portfolio

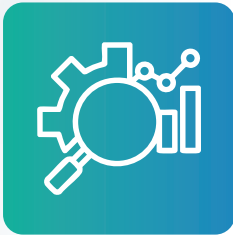
- ✓ Structural Design - Steel & RCC, high-rise, institutional & residential
  - ✓ PEB Solutions - End-to-end, IS, AISC & Euro Codes compliant
  - ✓ Detailed Engineering - shop drawings, connection design & proof checking
  - ✓ Façade Engineering - aesthetic, high-performance cladding systems
- ✓ Foundation Design - machinery & equipment, FEM-based heavy bases
  - ✓ QS & Tendering - estimation, billing, costing & documentation
  - ✓ Construction Management - turnkey execution, coordination & QA/QC





# Technical Capabilities

- ✓ Advanced Analysis : STAAD.Pro, Tekla Structural Designer, RCDC
- ✓ BIM Integration : Revit, Navisworks (clash detection & scheduling)
- ✓ FEM Modelling : ANSYS, Abaqus for complex stress analysis
- ✓ Proof Checking : Rigorous peer review ensuring code compliance
- ✓ Digital Collaboration : Cloud-based platforms for real-time coordination
- ✓ Corporate Layout : Integrated workflow & data management



## Advanced Analysis

STAD.Pro, Tekla RCDC



## BIM Integration

Revit, Networks



## FEM

ANSYS, Abauast



## Proof Checking

Peer Review



## Digital Collaboration

Cloud Platforms



## Corporate Layout

Integrated Workflow  
Data Management

# Supported Platforms / Compatible Software

- ✓ STAAD.Pro
- ✓ Autodesk Revit
- ✓ ANSYS
- ✓ Primavera P6
- ✓ BIM 360
- ✓ Tekla Structures
- ✓ Navisworks
- ✓ Abaqus
- ✓ Advance Steel
- ✓ Etabs
- ✓ RCDC
- ✓ Civil 3D
- ✓ SAP 2000
- ✓ SDS2
- ✓ Idea Statica

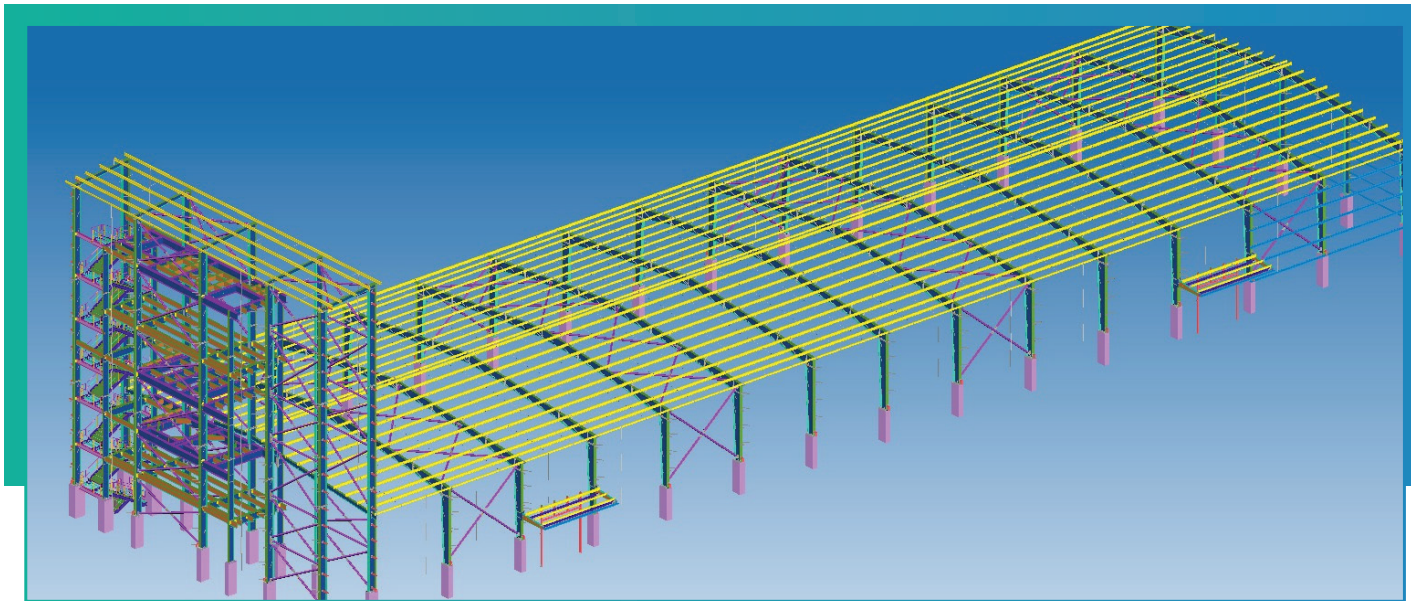


## Project : Industrial Shed - Leading Starch Industry

Role : Structural Design & Detailing Consultant

### Highlights

- ✓ 5-storey pneumatic steel structure (~32 m height)
- ✓ Integrated starch godown for process and storage
- ✓ Approx. 350 MT of optimized structural steel
- ✓ Designed for **Indian Seismic Zone IV**



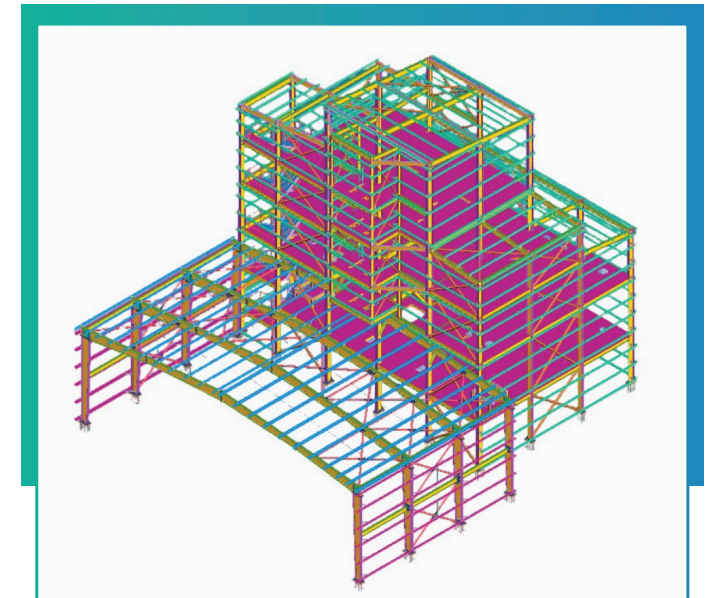
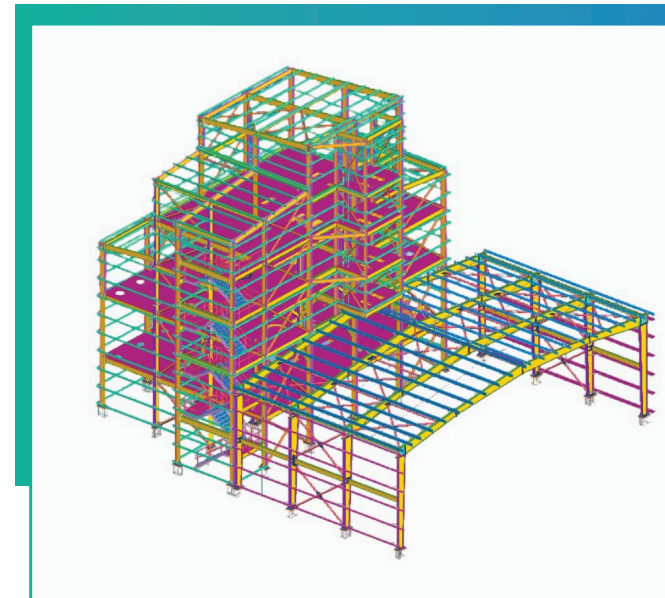
## Project : Industrial Building & Truck Loading Shed – Rice Mill

Role : Role: Structural Design & Detailing Consultant

Scope : Structural & Foundation Design

### Highlights

- ✓ 3-storey steel-framed industrial building (30 m x 35 m)
- ✓ Approx. 300 MT of fabricated structural steel
- ✓ Deep pile foundation system up to 22 m depth
- ✓ Designed for Indian Seismic Zone IV





### Project : Twin Industrial Silos – Deep Foundation Engineering

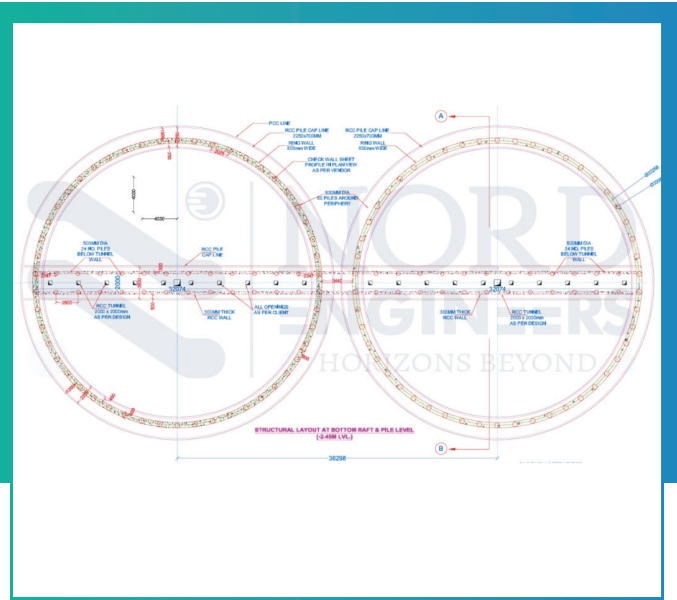
Nord Engineers delivered the deep foundation design for **twin industrial silos**, each **32 m in diameter** and carrying **10,000 Metric Tonnes of load**, under challenging ground conditions.

#### Challenge

The site comprised reclaimed land with weak and variable soil strata, posing risks of low bearing capacity and differential settlement.

#### Solution

A **pile-raft foundation system** was engineered, comprising **150+ cast-in-situ bored piles** extending up to **22 m depth**, supporting **twin raft foundations** structurally integrated through an underground tunnel to ensure uniform load transfer and settlement control. Designed for **Indian Seismic Zone IV**.



### Project : Long-Span Industrial Steel Shed

Scope: Structural Design & Detailing

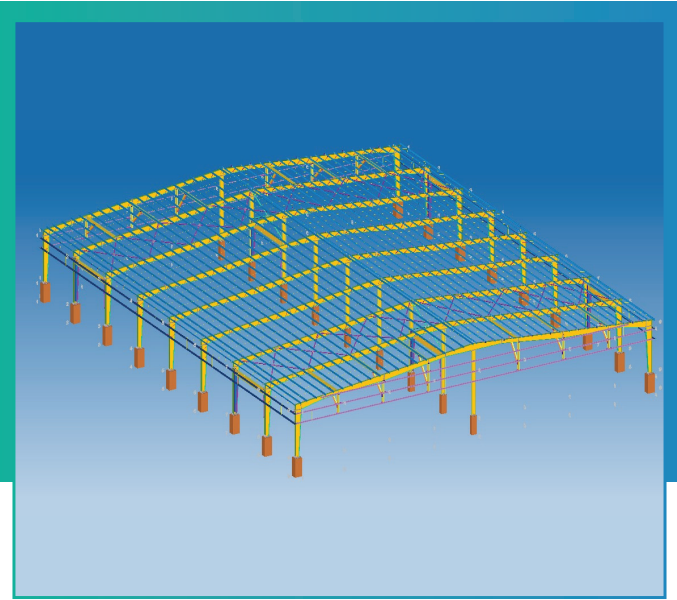
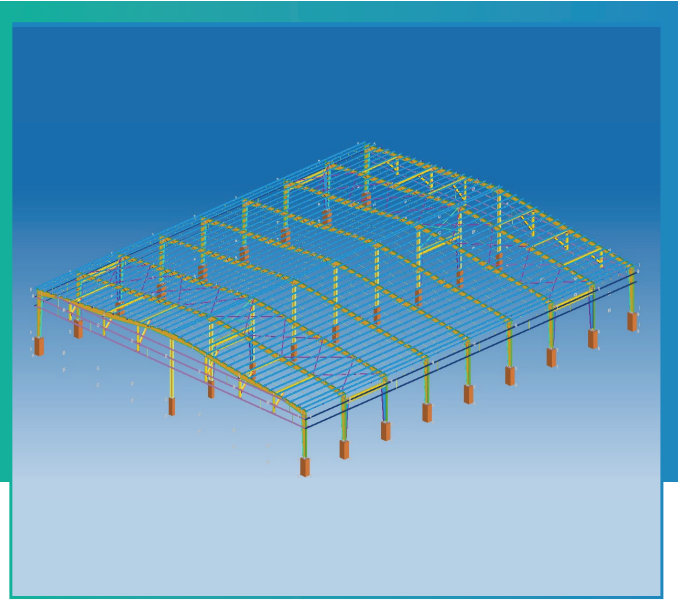
Plan Area: 58 m x 70 m (~ 4,060 m<sup>2</sup>)

Clear Span: 29 m

Steel Tonnage: 329 MT

#### Engineering Complexity:

- ✓ Long-span **curved / arched roof system** with 29 m clear span
- ✓ Optimized member sizing to control deflection and stability
- ✓ Integrated longitudinal and transverse bracing system
- ✓ Designed for industrial loading and serviceability requirements



## Project : ENRIC Fibre Godown – Industrial Steel Structure

Scope: Structural Design & Detailing

Plan Area: 44 m x 35 m (~ 1,540 m<sup>2</sup>)

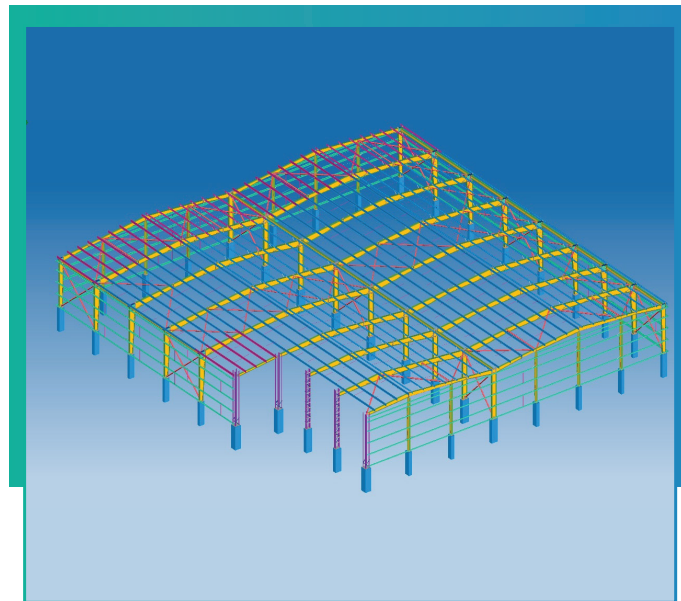
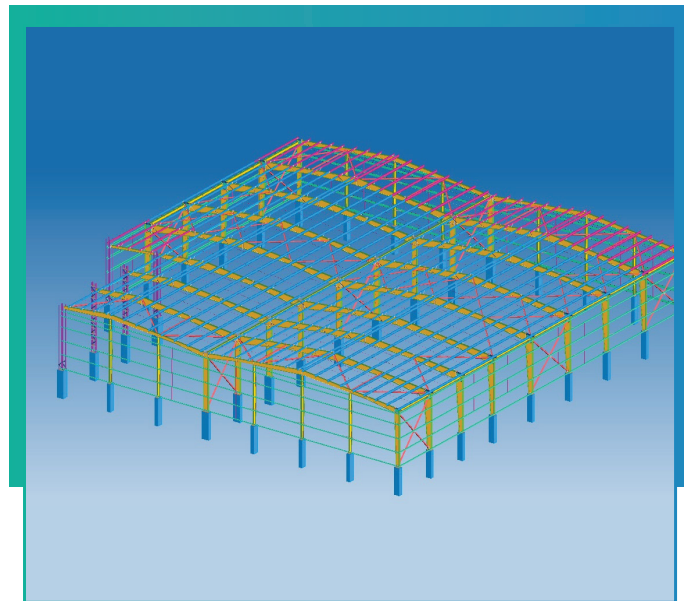
Structural System / Span:

- ✓ Multi-span steel framing with internal columns
- ✓ Curved / pitched roof system

Steel Tonnage: 217 MT

### Engineering Complexity:

- ✓ Integrated industrial godown with internal service zones
- ✓ Curved roof geometry requiring deflection control
- ✓ Dense column grid with optimized load transfer to foundations
- ✓ Coordinated superstructure—foundation design for industrial loads



## Project : Modified Starch Processing Building with Integrated Godown

Scope: Structural Design & Detailing

### Configuration:

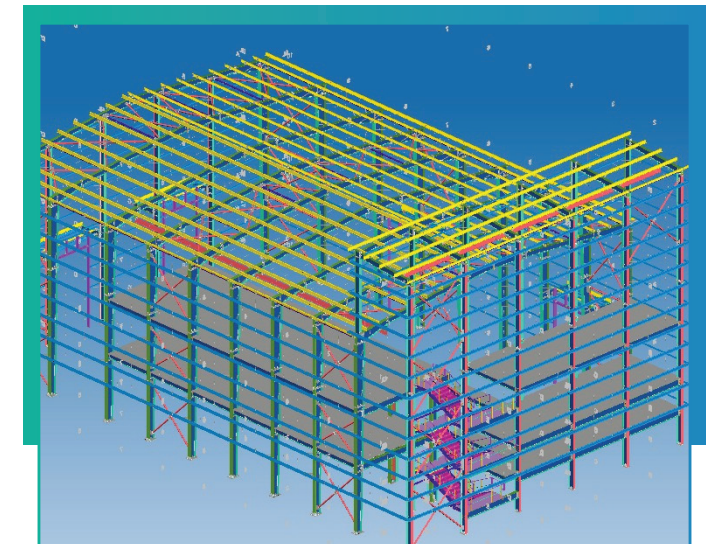
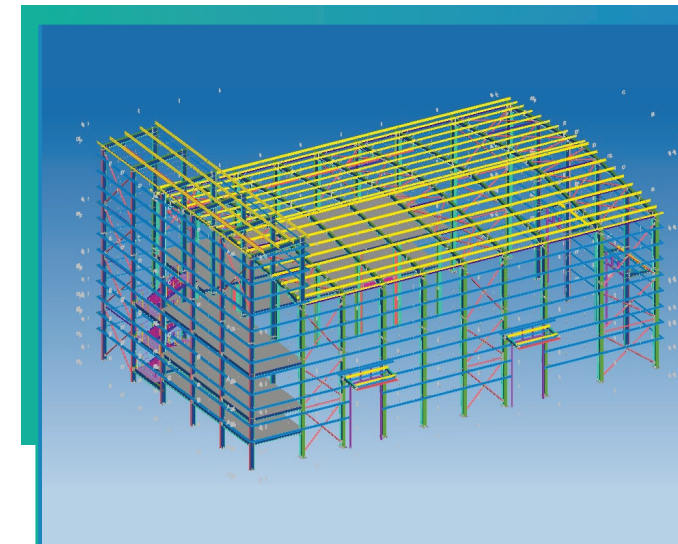
- ✓ 3-floor industrial steel structure
- ✓ Heavy process equipment and silos supported on deck
- ✓ Structurally integrated with adjoining godown building

### Foundation System:

- ✓ Pile foundation with piles up to 12 m depth

### Engineering Complexity:

- ✓ Heavy vertical and dynamic loads from silos and process equipment
- ✓ Equipment-supported floors requiring stringent deflection and vibration control
- ✓ Structural integration between **process building and storage godown**
- ✓ Coordinated superstructure and deep foundation design for load continuity





# Project Showcase

- Project** : Bharat Vandana Park, New Delhi
- ✓ **Role** : QS Consultant
- ✓ **Highlights** : Ten 42 m-high composite pylons; INR 110 Cr project cost



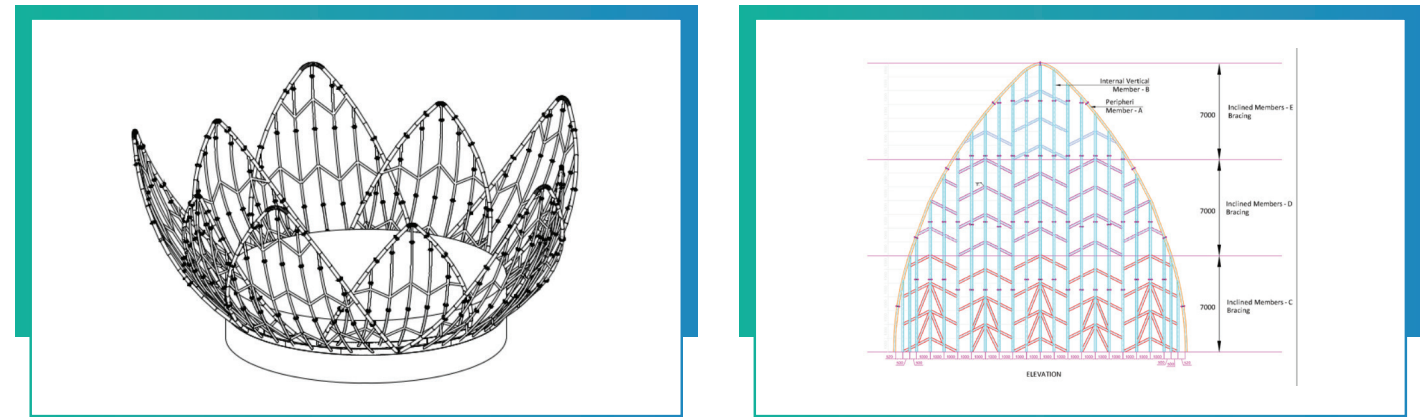
- Project** : New Life Hospital, Latur, M.S.
- ✓ **Role** : Structural Consultant
- ✓ **Highlights** : G+8, 15 m column-free spans, PT slabs; INR 16 Cr cost



- Project** : Value Mall Façade, Bangalore, KR.
- ✓ **Role** : Façade Engineer
- ✓ **Highlights** : 30 m-high façade, 500 m<sup>2</sup> canopy; INR 3.5 Cr ongoing



- Project** : War Memorial Domes, Punjab
- ✓ **Role** : Structural Detailing
- ✓ **Highlights** : Petal-shaped RHS tube domes (9.45 m & 10.52 m dia)



## Project : Linear Storage Shed – Industrial Steel Structure

Scope: Structural Design & Detailing

**Plan Area: 84 m x 10 m (~ 840 m<sup>2</sup>)**

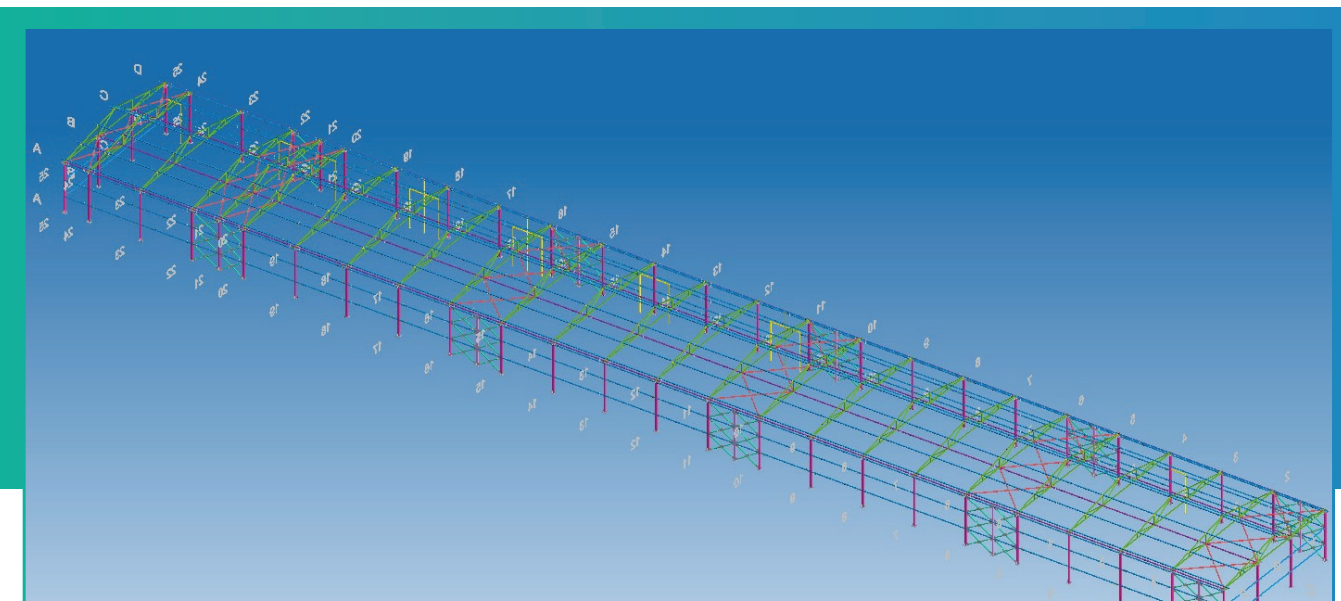
**Structural System / Span:**

- ✓ Linear multi-bay steel shed
- ✓ Repetitive portal framing system

**Steel Tonnage: 154 MT**

### Engineering Complexity:

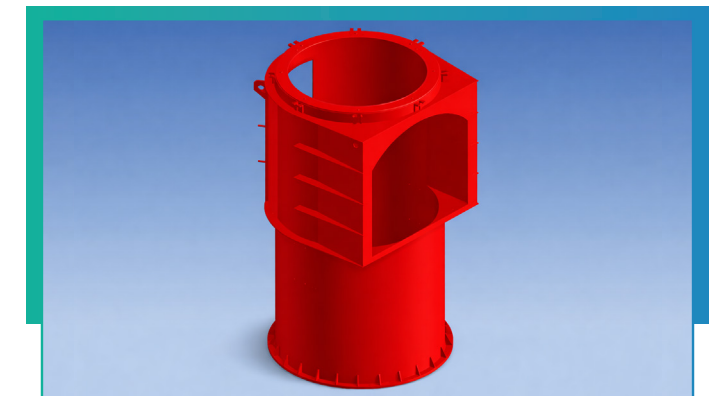
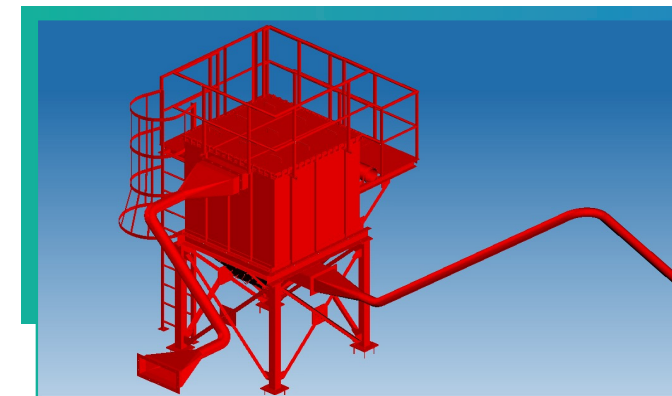
- ✓ Longitudinal stability control for **84 m long structure**
- ✓ Optimized repetitive framing for material efficiency
- ✓ Coordinated bracing system for global stability
- ✓ Designed to meet industrial storage and serviceability requirements



## Project : Mechanical Equipment Design & Detailing Capability

Along with our core structural engineering services, Nord Engineers Pvt. Ltd. also undertakes design and detailing of mechanical equipment and industrial process systems, offering fully coordinated solutions where equipment functionality, structural safety, and constructability are addressed together. Our expertise includes process equipment layout, load path definition, access and maintenance systems, and fabrication-ready detailing, ensuring seamless coordination between mechanical equipment and supporting steel structures.

In this domain, we have successfully executed multiple mechanical equipment design and detailing projects, including a 5000 CMH Bag Filter System and a Shaft Furnace, as well as Cathode Recharge Machine supporting structure, Holding Furnace, and Launder fabrication drawings. The scope across these projects covered equipment casing and shell detailing, hoppers and chutes, platforms, ladders, handrails, ducting and launder interfaces, and complete integration with the supporting structures. These assignments demonstrate our capability to deliver complex industrial equipment projects with high accuracy, fabrication clarity, and erection-friendly detailing, enabling efficient manufacturing and trouble





# List of Projects

Industrial Projects India Projects Between January 2025-October 2025					
Project Name	Location	Area	Cranes	Stories	Tonnage
Industrial Shed for a Starch Industry Pneumatic Building	Bihar, India	51,300 Sq. Ft			353 MT
Industrial Shed for a Starch Industry Starch Building	Bihar, India	51,300 Sq. Ft		G+5	
Industrial Shed for a Conductor Industry-Conductor Shed	Gujrat, India	48,118 Sq. Ft			248 MT
Industrial Shed for a Solar Panel Industry-CCR Shed	Gujrat, India	47,656 Sq. Ft	2-10 MT Cranes	G+0	115 MT
Industrial Shed for a Cement Industry	Madhya Pradesh India	22,950 Sq. Ft	2-10 MT Cranes	G+0	122 MT
Industrial Shed for a Rice Mill	Bihar, India	11,290 Sq. Ft		G+0	293 MT
22m Deep Pile & Raft Foundation for a Silo	Bihar, India	22,500 Sq. Ft		G+4	
Industrial Shed for a PEB Manufacturing Industry	Orrissa, India	18,000 Sq. Ft		G+0	165 MT
Industrial Shed for a Fabrication Unit	Orrissa, India	21,305 Sq. Ft		G+0	148 MT
Industrial Shed for a Painting Industry	Orrissa, India	22,940 Sq. Ft		G+0	68 MT
Industrial Shed for a Fertilizer Industry	Orrissa, India	20000 Sq. Ft		G+1	85 MT
Industrial Shed for DG s	Orrissa, India	1000 Sq ft	Curved Shed		15 MT

Apart from these we have carried out structural design for more than 150+ Projects in the Industrial Sector during the year 2024-2025



Projects Between January 2025-October 2025					
Project Name	Location	Area	Cranes	Stories	Tonnage
PEB Industrial Shed for a Solar Panel Manufacturing Company	Delhi, India	1,85,600 Sq. Ft	Structural Design & Detailing	75M Span 70,000 Sq Ft Mezzanine	1200 MT
PEB Ware House for a Mechanical Unit	Hyderabad, T.S. India	62,000 Sq. Ft		70M Span, 25MT EOTS	279 MT
PEB Shed for a Car Showroom and Service Unit	West-Bengal, India	22,000 Sq. Ft			97 MT
PEB Industrial Shed for Linus India Pvt. Ltd	Mowe, Ogun State, Nigeria.	23,000 Sq. Ft			93 MT
Pre Engineered Shed for Magnet Project (APMC)	Pachod, Maharashtra	23,000 Sq. Ft		Irregular Shaped, Clear Spans	86 MT
PEB Shed for a Manufacturing Unit	Gwalior, Madhya Pradesh, India	20,000 Sq. Ft			
Pre Engineered Shed for A.S.Industries	Jalna, Maharashtra	10,600 Sq. Ft			
Pre Engineered Shed for a Indoor Games-Sports Complex	West-Bengal, India	10,000 Sq. Ft			
Pre Engineered Shed for a Dal Mill	Gaziabad, Uttar Pradesh	18,000 Sq. Ft			
Pre Engineered Shed for a Industrial Canteen Building	Vadodara, Gujarat	6,200 Sq. Ft			
Pre Engineered Shed for Magnet Project (APMC)	Karmad, Maharashtra	6,000 Sq. Ft			
Pre Engineered Shed for a Mechanical Unit	Waluj, Maharashtra	6,000 Sq. Ft		G+2	G+2
PEB Multi-Storied Building for a Steel Fabrication Workshop	Bangalore, Karnataka, India	8000 Sq. Ft		G+1	G+1
Pre Engineered Shed for a Plastic Manufacturing Unit	Waluj, Maharashtra	6,000 Sq. Ft			

Apart from these we have carried out structural design for 70+ PEB Projects in the Industrial Sector during the year 2023-2024 which had regular configurations



Health Care Projects			
Project Name	Location	Area	Stories
Narhari Zirwal Ayurvedic College & Hospital	Nashik, Maharashtra	76000 Sq. Ft	B+G+5
Ajanta Multi Speciality Hospital	Sillod, Maharashtra	5,200 Sq. Ft	B+G+4
Shifa Hospital	Aurangabad, Maharashtra	4,600 Sq. Ft	B+G+2
Rehmat Hospital	Parbhani, Maharashtra	10,000 Sq. Ft	B+G+3
New Life Multi Speciality Hospital	Latur, Maharashtra	56,000 Sq. Ft	B+G+6
Primeiro Healthcare Building	Nashik, Maharashtra	27,000 Sq. Ft	G+1
National Health Mission Hospitals	Aurangabad & Jalna	Varied	Varied
National Health Mission Hospitals	Peth & Shahunagar	Varied	Varied
Manekar Hospital	Nanded, Maharashtra	10,000 Sq. Ft	B+G+2
Roof Shed for Covid Center	Delhi	23,000 Sq. Ft	G+0

Commercial Projects			
Project Name	Location	Area	Stories
Commercial Complex	Jalna, Maharashtra	7,500 Sq. Ft	G+3
Commercial Cum Residential Building	Aurangabad, Maharashtra	4,800 Sq. Ft	B+G+3
Narlawar Heights	Degloor, Maharashtra	31,500 Sq. Ft	P+6
Yumazing Restaurant	Aurangabad, Maharashtra	4,000 Sq. Ft	G+1
Commercial Building for Mr. Amish Nishchal	Subhashnagar, New Delhi	7,600 Sq. Ft	G+4
Hotel Building (Steel Structure)	Ellora, Maharashtra	8,500 Sq. Ft	B+G+2

Residential Buildings			
Project Name	Location	Area	Stories
Residential Apartment for Mr. Ashutosh Kumar	Hyderabad, Telangana	10,000 Sq. Ft	P+4
Residential Building for Mr. N. Sonawne	Aurangabad, Maharashtra	8,000 Sq. Ft	P+5
Residential Building for Mr. Avinash. Pekamwar	Aurangabad, Maharashtra	8,000 Sq. Ft	P+4
Residential Building for Mr. Anukool Kumar	Noida, Delhi	7,600 Sq. Ft	G+4
Garud Niwas for Mr. Suresh Sonawne	Waluj, Maharashtra	15,700 Sq. Ft	G+2
Residential Apartment	Nashik, Maharashtra	30,000 Sq. Ft	G+10

Apart from these we have carried out structural design for more than 100+ clients in the Residential Sector during the year 2020-2022





Institutional Buildings			
Project Name	Location	Area	Stories
Fire-Station Building	Parbhani, Maharashtra	13,000 Sq. Ft	G+6
Shiva Trust Medical College & Hospital	Shrirampur, Maharashtra	62,500 Sq. Ft	G+5
Shivaji Rao Pawar Ayurvedic College	Newasa, Maharashtra	62,500 Sq. Ft	G+4
Shiva Trust Hostel Building	Shrirampur, Maharashtra	13,000 Sq. Ft	G+3
Sharad Chandraji Pawar College	Newasa, Maharashtra	44,000 Sq. Ft	G+3
Ekta School and Junior College	Jalgaon, Maharashtra	12000 Sq. Ft	G+2
Queens College of Food Technology	Aurangabad, Maharashtra	36,000 Sq. Ft	G+3
National English High School	Ajanta, Maharashtra	10,000 Sq. Ft	G+2
Dar-ul-Uloom School	Daulatabad, Maharashtra	20,000 Sq. Ft	G+3

Monumental Structures	
Project Name	Location
Shaheed Smarak Auditorium	Aurangabad, Maharashtra
Chhatrapati Shivaji Maharaj Statue	Degloor, Maharashtra
Chhatrapati Shivaji Maharaj Statue at Dr. Babasaheb Ambedkar Marathwada University	Aurangabad, Maharashtra
Dr. Babasaheb Ambedkar Statue	Parbhani, Maharashtra
Iconic Fort Gate at Samrudhi Maha-Marg	Sindhkhedraja, Maharashtra

Machine Foundations			
Project Name	Location	Area	Stories
C.C. Block Foundation with Springs, FEV India Pvt. Ltd	Pune, Maharashtra	500 Sq. Ft	53.2 MT Capacity
Rotary Machine's Foundation, FEV India Pvt. Ltd	Delhi	700 Sq. Ft	65 MT Capacity
D.G. Foundation with Stacks, KCC Infra Pvt. Ltd	Delhi	400 Sq.Ft	15 MT Capacity
Bio-Gas Baloon's Foundation, Meera Clean Fuels Pvt. Ltd	Varied Locations	2800 Sq.Ft (18M Dia)	35 MT Capacity

Miscellaneous Sectors			
Project Name	Location	Area	Stories
Structural Design of Krida Sankul, Badminton Court	Parbhani, Maharashtra		
Structural Design of Pylon Board for MCL	Raigad, Maharashtra		
Structural Design of Industrial Pavements	Nashik, Maharashtra		100 MT
Structural Design of a Hoarding Frame (Uni-Pole)	Jaipur, Rajasthan		
Structural Design of a Hoarding Frame (Bi-Pole)	Faridabad, Haryana		
Industrial Ramp & Stairacse for Unique Constructions	Ghaziabad, Uttar Pradesh		15 MT Capacity
Industrial Gate for Meera Clean Fuels Ltd.	Varied Locations		
Railway Bridges for Dedicated Freight Corridor (DFC)	52 Varied Locations		
Façade for Office Building, Mahanagar Gas Ltd.	Mumbai, Maharashtra	6,000 Sq. Ft	G+4

# Global Footprint

- ✓ Pan India presence with projects in Delhi, M.S, Telangana, GJ, KR. and other metros
- ✓ UK office driving international business and ensuring full Eurocode compliance
- ✓ Projects executed in Nigeria, UK and UAE, KSA, Qatar, Bahrain, under global structural codes
- ✓ Alliances with 27+ PEB manufacturers across the globe for large-scale execution





# Quality Management And Certifications

- ✓ Internal Six-Sigma and Kaizen programs for continuous improvement
- ✓ Accredited member of the Indian Society of Structural Engineers
- ✓ ISO 14001:2015 – Environmental Management Systems
- ✓ Adherence to IS, AISC, BS, Eurocode, and API standards
- ✓ ISO 9001:2015 – Quality Management Systems



ISO 9001:2015  
Quality Management  
Systems



Internationally Certified  
Quality Controls Across  
All Projects



Indian Society of  
Structural Engineers  
Membership



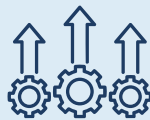
Continuous Six-Sigma &  
Kaizen Programs

# Awards & Industry Recognitions

- ✓ Finalist “Excellence in Structural Engineering,” Asia Pacific Awards 2023
- ✓ Top 50 Engineering Consultancies, Indian Construction Review 2024
- ✓ Recognized by ISSE Aurangabad Chapter for innovation in seismic design



ISO 14001:2015  
Environmental  
Management Systems



Standards Improvement:  
Six-Sigma Programs



Professional Badges  
Recognition



Professional Badges &  
Recognition

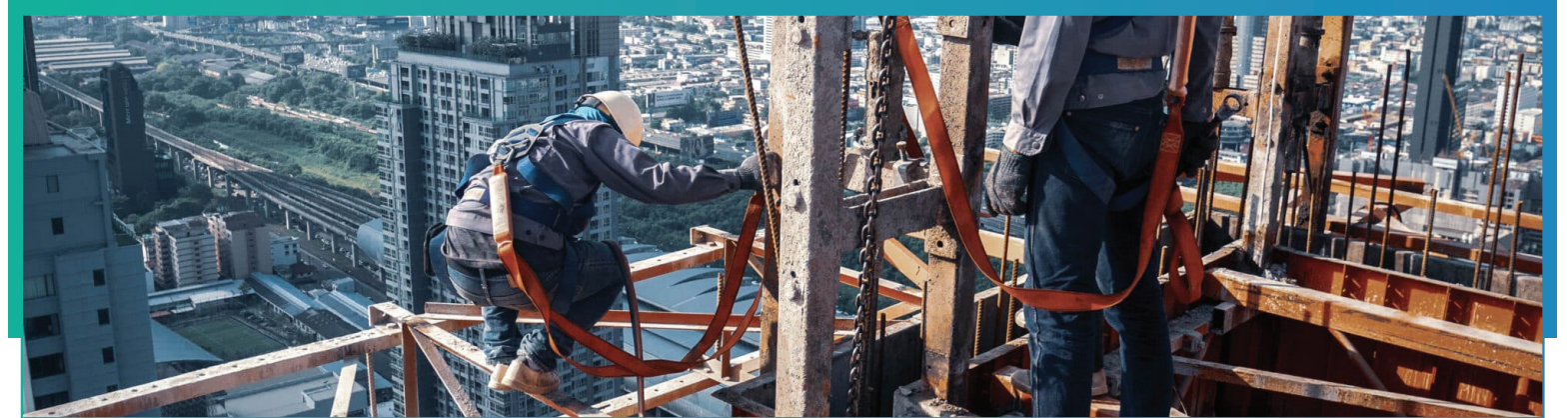
## Innovation and Research & Development

- ✓ Digital twins developed for lifecycle monitoring and asset management use
- ✓ Collaboration with institutes for seismic-resilient structural design work
- ✓ Pilot projects executed in modular construction and 3D-printed formworks
- ✓ In-house R&D focused on advanced high-strength steel alloy development



## Sustainability & Safety Initiatives

- ✓ Green design protocols with material efficiency and carbon tracking tools
- ✓ Energy-efficient façades with solar shading and daylight harvesting systems
- ✓ Zero-incident safety culture aligned with full ISO 45001 compliance norms
- ✓ Regular HSE training, toolbox talks and third-party safety audit programs



## Strategic Partnerships

- ✓ Government Entities: CPWD, PWD, NHM, APMC and DFCC partners
- ✓ Industry Alliances: Adani, Sintex, MCL, Mahanagar Gas and FEV India
- ✓ Academic Tie-ups: ISSE Aurangabad Chapter, ASCE, ICE and RISSE
- ✓ Technology Collaborators: Autodesk, Bentley Systems and ANSYS tools





# Client Testimonials & Success Stories



Nord Engineers delivered our hospital project ahead of schedule with unmatched attention to safety and quality

**Healthcare Developer, New Life Hospital**



Their PEB team optimized our plant layout, cutting steel tonnage by 12% while enhancing load capacity.

**CEO, Solar Panel Manufacturing Unit**



From concept to commissioning, they managed every phase with transparency and technical excellence.

**Director, Value Mall Bangalore**



Nord Engineers handled the complete PEB detailing for our 400 MT project. The drawings were clear, fabrication-ready, and required minimal back-and-forth.

**Head of Engineering, PEB Manufacturing Company**



We had tight timelines and multiple stakeholders. Nord Engineers coordinated well and kept the project moving without surprises.

**Industrial Project Developer**



What stood out was their clarity in drawings and responses during execution. It made site coordination easier.

**Senior Project Manager, Commercial Development**

# Our Team & Expertise



With 9+ years of experience and a master's in Structural Engineering, Er. Sohail leads the design of buildings, industrial sheds, PEBs and bridges. As Joint Secretary of the Indian Society of Structural Engineers (Aurangabad Chapter), he contributes actively to the engineering community. His collaboration with academia drives innovation and strengthens Nord Engineers' technical excellence.

**Er. Sohail Shaikh**  
(Founder & Director - Design)



With 34+ years of experience in executing complex projects, Er. Salim ensures precision, safety and efficiency across all construction and erection operations. His strategic leadership has strengthened Nord Engineers' reputation for quality and reliability. Under his guidance, the company continues to set industry benchmarks and deliver high-performance project execution.

**Er. Saleem Shaikh**  
(Director - Construction)



Holding master's degrees in Construction Project Management and Structural Engineering, Er. Saad combines technical and managerial expertise to drive Nord Engineers' global expansion. Based in the UK, he leads business development, builds strategic partnerships and enhances the company's market presence while offering solutions aligned with both technical and project management needs.

**Er. Saad Shaikh**  
(Director - International Business)

- ☎ For Business Enquiries : +91 9028 7209 00
- ✉ For Business Enquiries : [business@nord-engineers.com](mailto:business@nord-engineers.com)
- ✉ For Design Queries : [norddesignhub@gmail.com](mailto:norddesignhub@gmail.com)
- 🌐 [www.nord-engineers.com](http://www.nord-engineers.com)

Chamber 03, Taha Heights,  
Opp. Dr. Rafiq Zakariya Campus,  
Rauzabaugh, Ch. Sambhaji Nagar  
(M.S) - 431001 India.

### INDIA ADDRESS

32 Eyre Street, Sheffield, S14QZ.  
United Kingdom

### UK ADDRESS

- ✓ © 2026 Nord Engineers. All rights reserved.
- ✓ The information contained herein is proprietary and subject to change without notice.
- ✓ Nord Engineers™ is a registered trademark.
- ✓ Any unauthorised reproduction or distribution is prohibited.
- ✓ For detailed terms, visit [www.nord-engineers.com/terms](http://www.nord-engineers.com/terms).



Follow us on:

